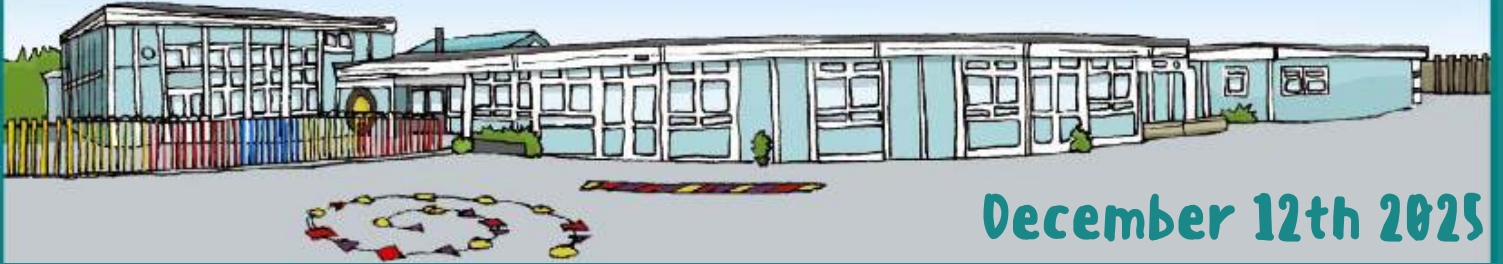


Gwenfo News



December 12th 2025

Upcoming Events

Dec 14th
Farmers Market

Dec 15th
Y2 Christmas Unwrapped

Dec 15th - 16th
Year 4/5/6 Christmas Concerts

Dec 17th
Whole School Trip
Jack Frost
NO NURSERY TODAY

7pm Community Carols at St.
Mary's

Dec 18th
9:15am Upper School Carol
Service at St Mary's (watch
online)
9.30-10.30 am Christingle Service
(Reception parents invited)

End of term
19th December



Christmas Fun Day
All classes
Wear Party Clothes
Friday 19th December

INSET DAY
Feb 23rd
School closed to all

The old e-mail address is no longer in use.
Please make sure you use our new email
address when contacting the school.

office@gwenfocwprimary.co.uk

This week in Gwenfo

Our value this half term is **TRUST**

Another busy sparkly week here at Gwenfo.
We are so very proud of the children in
middle school who performed their
fireside nativity this week. What a show!
Thank you to all of our families for your
support and coming along!

Huge thanks to our kitchen and midday
supervisor team - we had a delicious
Christmas dinner together on Thursday.

Thanks to our PTFA for providing Santa
hats!

Our choir visited Glenburnie care home.
They loved their visit and their kind gifts
too!

REMINDER

Staff have asked for a couple of reminders:

- Please can children not bring in toy keyrings/bag charms.
- Also just a polite reminder **stud earrings only** and a **simple watch** - no other jewellery e.g. bracelets or necklaces please.



FOR SALE



We have a number of fresh chicken eggs available for sale! You can grab a box of 6 for just £2.40, or if you prefer, it's only 40p per egg. What a fantastic deal!

These eggs are perfect for breakfast, baking, and all sorts of culinary delights. So why not treat yourself and your family?

If you're interested, do let us know—we would love to get these eggs to you soon!



Attendance

NURSERY AM	91.67%
NURSERY PM	93.18%
RECEPTION	85%
YEAR 1	81.165
YEAR 2	90.84%
YEAR 3	88%
YEAR 4	85.52%
YEAR 5	97.32%
YEAR 6	91.6%



Christmas Concert Dates



The following dates have been set for our Christmas Concerts

Year 4/5/6 December 15th 2pm

Year 4/5/6 December 16th 2pm & 6pm

Any spares can be bought from the office.

Enter via back hall doors (Nursery Path)

Loose change collection at the end of each performance

- please bring some spare change

Each class will nominate a charity to support

Dismissal arrangements

Following 2pm shows we are happy for you to take your child home - we will open the gates and you are welcome to come to collect from the usual doors. Please allow 10 minutes after the performances as children will need to get changed! Unfortunately we are unable to arrange for the early collection of any siblings at this time.

Evening Performances

Children to be dropped off at 5.30pm via Main Entrance

Parents to enter via rear hall doors (Nursery Path)

Collection from front playground at 6.50pm

Y4 office door Y5 classroom door Y6 cloakroom door

No children will be permitted to walk home unless we have an email from you stating this as your wish.

Joy To The World

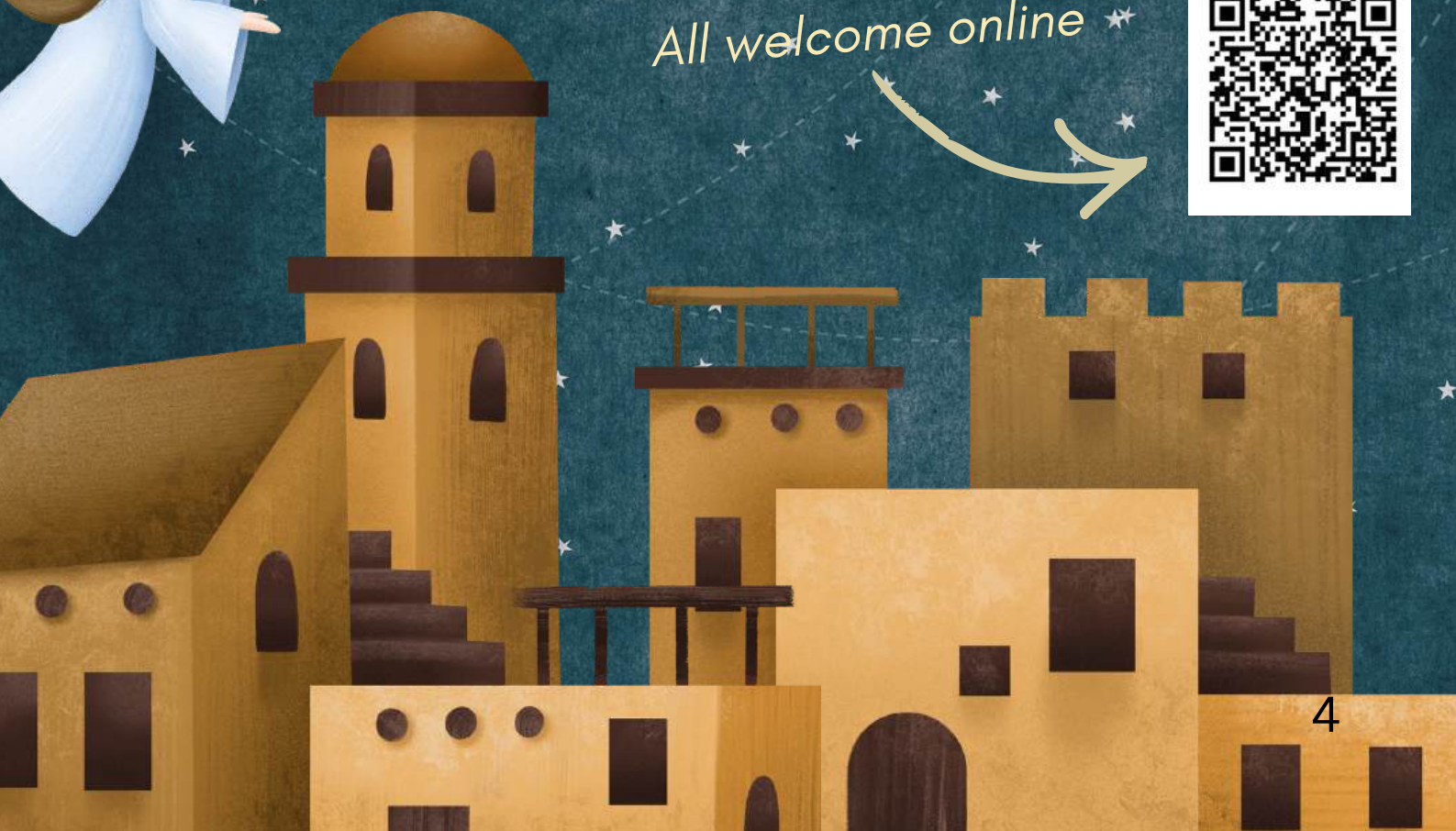


UPPER SCHOOL CHRISTMAS
CAROL SERVICE

18.12.25 - 9.15 AM

**ST MARY'S CHURCH,
WENVOE**

All welcome online



Reception class families are invited
to our interactive

Christingle SERVICE



Thursday, December 18th

All Reception class families welcome
School Hall 9.30am



Menu change

Next Thursday will be a Sausage Roast dinner instead of a Turkey Roast Dinner.



Free!



We are a NUT and KIWI FREE School.

Please ensure any food bought into does not contain nuts or kiwi due to severe allergies!

This week we lit our second advent candle symbolising peace.



Taking a little time each day to light our candles, turn on our tree lights or just to pause and reflect is so important. During the season of Advent each class will complete work on the meaning of this special time of year in the Church as well as Christmas traditions around the world.

Christmas Services at Wenvoe and St. Lythans

LESSONS & CAROLS

17th Dec at Wenvoe 7pm
21st Dec at St Lythans 3pm
Light refreshments to follow.

CHRISTMAS EVE

5pm All Ages at Wenvoe
11pm Candlelight Eucharist Wenvoe

CHRISTMAS DAY

9:30 am Holy Eucharist with Carols
at St Lythans

ALL WELCOME



Arbor

We still have a few Parents that have not yet signed up to the Arbor App or Parent Portal. Please contact the office if you would like us to help you.

TO DO

- Make sure your child's details are up to date.
- Make sure your details are up to date.
- Please check any outstanding consents on the Arbor App or Parent Portal.





Dear Parents and carers,

We are Year 5 pupils at Gwenfo Primary School. We are writing to inform you about an important fundraiser that our class is undertaking to support Llamau Charity. Llamau is a Welsh charity that supports homeless young people.

Recently, our class read 'The Christmas Eve Tree', a moving story that opened our eyes to the struggles faced by the people without a safe and secure place to call home. After reading the book, we realised that the little boy in the story was homeless. It is heartbreaking to think that some children do not have homes. Following this, we were fortunate to have a visit from a fundraiser representing Llamau Charity. He spoke about how the charity has been running since 1986. They have over 600 people working tirelessly to help homeless people.

Moved by these experiences, Year 5 has decided to take action. We are organising a collection of toiletries such as **shampoo, soap, toothpaste and toothbrushes, as well as warm clothing including hats, gloves and scarves** and we will also have a stall at the Christmas Fayre selling items we have been making. We would also kindly ask for donations of wrapping paper as Year 5 will be wrapping up the gifts! We believe that, with your help we can make a difference to the lives of those who need it most. Every donation counts, no matter how big or small any support you can offer will make a real impact. Please bring the donation in by the **17th December**.

We are asking for your support as your kindness will help make a difference by donating toiletries and warm clothing. Together, as a community, we can bring hope to those who are struggling.

If you have any questions or would like further information about how you can get involved, please do not hesitate to contact us. Your kindness can help someone feel valued and cared for.

Your Sincerely

Year 5
Gwenfo Church in Wales Primary School

Spring Term Clubs

- All clubs cost £3 per session and run for 10 weeks (Until Easter).
- Spaces are limited and will be allocated on a first come first served basis.
- Clubs are run by staff and may change at short notice if staff are unwell.
- Instructions on how to do so are in the link below.



Enterprise Club

Wednesday 3.30-4.30pm
led by Miss Hurrell &
Miss Williams

Year 2 and 6
8 Spaces Left



Coding Club

Monday 3.30-4.30pm
led by Mr Bean

Year 4, 5 and 6
8 Spaces Left



FOOTBALL

THURSDAY 3.30-4.30PM
LED BY MR BEAN / CCFC

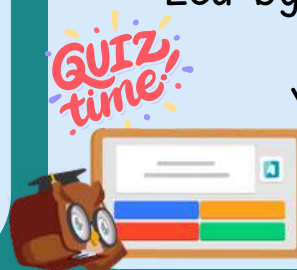
YEAR 5 AND 6
7 SPACES LEFT



Blooket Club

Monday 3.30 - 4.30pm
Led by Miss Bannister

Year 3, 4, 5 and 6
1 Space Left





Wedi ei ariannu gan
Llywodraeth y DU

Funded by
UK Government

ND
COMMUNITY
CONNECTORS
CIC



Cadog's Corner

ND Support Coffee Mornings

For parents/carers of children on the Neurodevelopmental
Service waiting list or with a diagnosis.

Topics include:

Introduction to ND, Services and support available whilst
waiting or post diagnosis, Education, Finance, Wellbeing.

Location: Victoria Park Community Centre,
24 Church Road, Barry, CF63 1JX

Time: 9:15am till 10:45am

Dates: Friday, 9th January 2026

Friday, 23rd January

Friday, 6th February

Friday 6th March

Friday, 20th March

Friday, 17th April

Friday, 1st May

Friday, 15th May

Friday, 12th June

Friday, 26th June

<https://ndcommunityconnectorscic.org>

Vale of Glamorgan Community Connectors
Coffee Mornings at Cadoxton Primary School.

All welcome.



Families Learning Together

Cardiff and Vale College
Coleg Caerdydd a'r Fro



Course name :
Fizzy Fun

School: **Gwenfo
Primary School**

Starts: **Monday
5th January 1pm**

For parents/carers of
children in Year 4, 5
and 6

Come along to
find out more

COURSE DETAILS

Join the fun and unlock the secrets to boosting your child's education right from your living room!

Dive into a whirlwind of STEM-tastic activities that promise to be a blast-literally! Get ready for some explosive fun as you and your children embark on thrilling adventures together!

You become a student and gain a certificate!



Contact us
families@cavc.ac.uk

We have an exciting new course for families with children in Year 4,5&6 starting after Christmas. This is a 10 week course run by Cardiff and Vale College in our Cabin on Monday afternoons - starting **Monday January 5th at 1pm Just turn up!**

Welcome to the...

**CWMPAWD
TEULU BRO**

DOD O HYD I ATEBION GYDA'N GILYDD



**VALE FAMILY
COMPASS**

FINDING SOLUTIONS TOGETHER

**What is the
Vale Family
Compass?**



**One front door
to access support
for families**



**Family Information Service, Early
Help and Intake Team**



Now under one umbrella so you get
information, advice, support and
protection through one phone number,
one website and one email address.



0808 281 6727



**familycompass@
valeofglamorgan.gov.uk**

valefamilycompass.co.uk

Family Compass enables families to access support from Vale
Services.

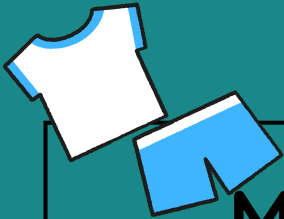
Please take a look at the website.
There is lots of help available for all aspects of
parenting and family life.



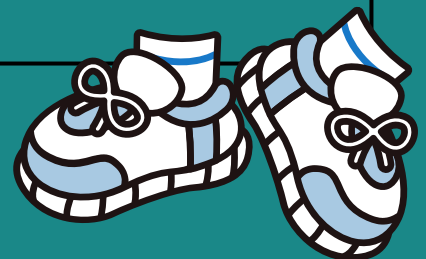
Games and PE days

On PE/Games days pupils can wear their PE Kit to school

Each class has two days where they wear kit apart from Nursery who only have one.



MONDAY	NURSERY, Y3 AND Y4
TUESDAY	Y1, Y2 AND Y6
WEDNESDAY	RECEPTION AND Y5
THURSDAY	Y1, Y2, Y3, Y5 AND Y6
FRIDAY	RECEPTION AND Y4

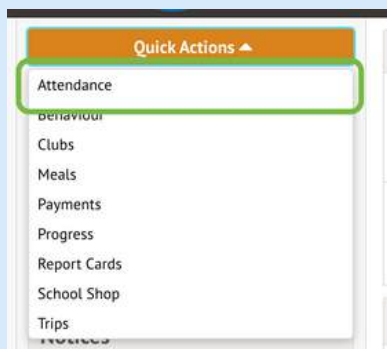


****Year 5 PE Sessions will change to Tuesday and Wednesday after Christmas****



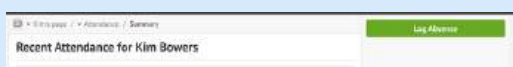
Arbor

You can now log a same day absence on your Parent Portal or Arbor App.



To record an absence, click on the Quick Actions button and then click Attendance

From here, click the green Log Absence button in the top-right of the page



Here, you can input the start and end time for the absence and type in the reason for the absence. By default, the absence start and end times reflect the student's full day, but these can be adjusted as needed. Once you have filled in this data, click Log Absence. This will then be visible to school staff.

You can also log a same day absence by calling our absence line on **02920 593225** and pressing 1.

Gwenfo Church in Wales Primary School Absence Form



For any planned absences such as unauthorised holidays or future medical appointments, please either click the link [here](#) or scan the QR code with a smartphone.

Please make sure to complete the reason for absence in the Note section.

Office Hours

The school office is open from 8.30am-4pm daily.

Please check weekly newsletters/emails for information before contacting the school - we endeavour to send out all information in a timely manner.

All families should have a copy of our year planner.

Please note we will always try to respond to phone calls or emails as quickly as possible but at busy times we may take up to 5 days.

Teaching staff are always available at the end of the school day for a quick chat, or can make an appointment with you if a longer time is needed.