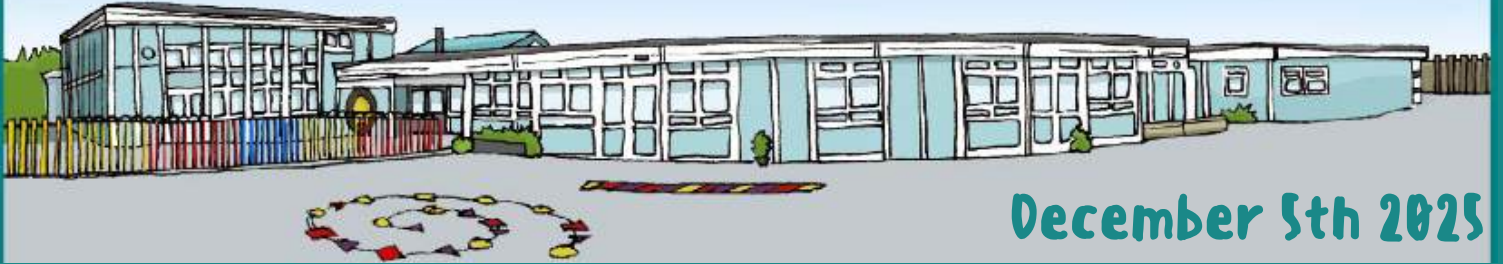


Gwenfo News



December 5th 2025

Upcoming Events

Dec 9th

Nursery Induction for January Intake
11:30 - 12:30

Dec 9th - 10th

Year 1/2/3 Christmas Concerts

Dec 11th

Christmas Jumper Day
Christmas Dinner Day

Dec 14th

Farmers Market

Dec 15th - 16th

Year 4/5/6 Christmas Concerts

Dec 17th

Whole School Trip
Jack Frost
NO NURSERY TODAY

7pm Community Carols at St. Mary's

Dec 18th

9.30-10.30 am Christingle Service
(Reception parents invited)

End of term
19th December



Christmas Fun Day

All classes

Wear Party Clothes

Friday 19th

December

The old e-mail address is no longer in use.
Please make sure you use our new email
address when contacting the school.

office@gwenfocwprimary.co.uk

This week in Gwenfo

Our value this half term is **TRUST**

We have had lots of very excited children this week! The countdown to Christmas has begun! Well done to our Nursery and Reception children (and staff) who have battled through illness this week to put on 2 wonderful nativity performances. Thank you to families for your support!

Thanks to everyone who supported our Christmas Fair this week. Huge thanks to our PTFA members for organising everything and a super special thanks to Father Christmas and one of his elves who visited to make the evening really special. Thank you too to Mr Yates, Mrs Seaward, Mrs Jones and our choir for a super performance.

Thank you to families who have helped us out this week with the chickens - it is so heartwarming to have so many families willing to help us out and put the chickens to bed!

Please note the community carols at St Mary's is Wednesday 17th December at 7pm - all are welcome!

REMINDER

A growing number of children are wearing nail polish and acrylic nails to school. Please ensure these are removed as soon as possible.

FOR SALE



We have a number of fresh chicken eggs available for sale! You can grab a box of 6 for just £2.40, or if you prefer, it's only 40p per egg. What a fantastic deal!

These eggs are perfect for breakfast, baking, and all sorts of culinary delights. So why not treat yourself and your family?

If you're interested, do let us know—we would love to get these eggs to you soon!



Attendance

NURSERY AM	84.75%
NURSERY PM	89.09%
RECEPTION	64.17%
YEAR 1	88.67%
YEAR 2	87.33%
YEAR 3	93.33%
YEAR 4	88.62%
YEAR 5	94%
YEAR 6	86.8%



Christmas Concert Dates



The following dates have been set for our Christmas Concerts

Year 1/2/3 December 9th 2pm (**Sold Out**)

Year 1/2/3 December 10th 2pm (**Sold Out**) & 6pm

Year 4/5/6 December 15th 2pm

Year 4/5/6 December 16th 2pm & 6pm

Any spares can be bought from the office.

Enter via back hall doors (Nursery Path)

Loose change collection at the end of each performance

- please bring some spare change

Each class will nominate a charity to support

Dismissal arrangements

Following 2pm shows we are happy for you to take your child home - we will open the gates and you are welcome to come to the usual classroom doors. Please allow 10 minutes after the performances as children will need to get changed! Unfortunately we are unable to arrange for the early collection of any siblings at this time.

Evening Performances

Children to be dropped off at 5.30pm via Main Entrance

Parents to enter via rear hall doors (Nursery Path)

Collection from front playground

Y1 office door Y2 staffroom door Y3 cloakroom door



£350

**Raised by the
Sparkle Disco**

**THANK
YOU**

£125

Raised from the candle
painting workshop

Well done to our Y6 group
led by Ariana who raised
over **£56** for the school at
their stall.

Y5 raised **£62** for Llamau
Homeless Charity. Thank
you to the children and
parents in Y5 for your
support.



Huge thanks to Mr Tucker
and Miss Hurrell for their
star appearances at the
Christmas Fair.



Enterprise News



Thank you to everyone who has supported our sales over the last
term. We have raised over £250 to buy new playground toys.



Classes enjoyed their final trip this year to our library. It was super to see the lovely decorations and choose a last book before Christmas.



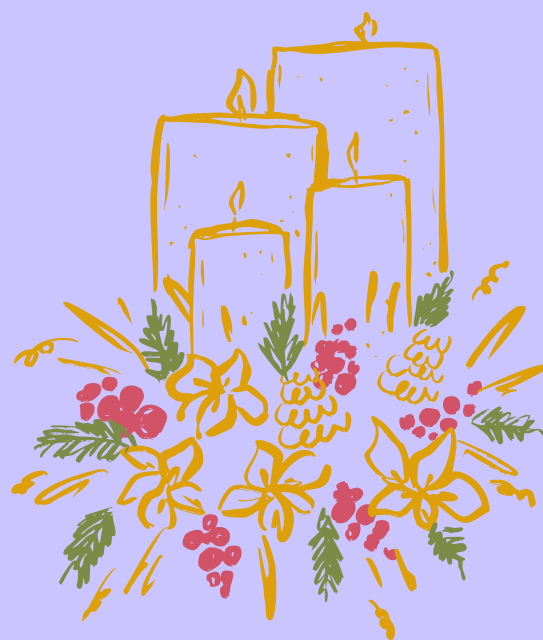
We love visiting the library - thank you to all the volunteers for always helping us choose super books and for letting us stamp them too!



Huge thanks to Jamie Burley Group Ltd, Flat and Pitched Roofing Specialists who helped us out after our chicken run roof fell in! We are so grateful to members of our community came to our rescue after heavy rain caused the roof to collapse!

This week we lit our first advent candle symbolising hope. Vicar Lyndon talked to us about the season of advent and the meaning of Christmas.

Taking a little time each day to light our candles, turn on our tree lights or just to pause and reflect is so important. During the season of Advent each class will complete work on the meaning of this special time of year in the Church as well as Christmas traditions around the world.



CHRISTMAS SERVICES

LESSONS & CAROLS

17th Dec at Wenvoe 7pm

21st Dec at St Lythans 3pm

Light refreshments to follow.

CHRISTMAS EVE

5pm All Ages at Wenvoe

11pm Candlelight Eucharist Wenvoe

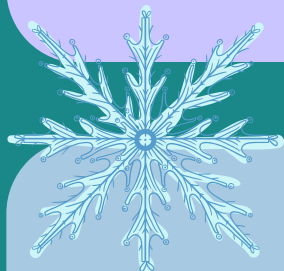
CHRISTMAS DAY

9:30 am Holy Eucharist with Carols
at St Lythans

ALL WELCOME

**Christmas Services at
Wenvoe and St. Lythans**

All welcome!



Jack Frost

Final payments need to be made by Wednesday 10th December please as we need to confirm tickets and buses. Any children not attending the show are expected to attend school as normal apart from Nursery children as Nursery is closed all day.



Dear Parents and carers,

We are Year 5 pupils at Gwenfo Primary School. We are writing to inform you about an important fundraiser that our class is undertaking to support Llamau Charity. Llamau is a Welsh charity that supports homeless young people.

Recently, our class read 'The Christmas Eve Tree', a moving story that opened our eyes to the struggles faced by the people without a safe and secure place to call home. After reading the book, we realised that the little boy in the story was homeless. It is heartbreaking to think that some children do not have homes. Following this, we were fortunate to have a visit from a fundraiser representing Llamau Charity. He spoke about how the charity has been running since 1986. They have over 600 people working tirelessly to help homeless people.

Moved by these experiences, Year 5 has decided to take action. We are organising a collection of toiletries such as **shampoo, soap, toothpaste and toothbrushes, as well as warm clothing including hats, gloves and scarves** and we will also have a stall at the Christmas Fayre selling items we have been making. We would also kindly ask for donations of wrapping paper as Year 5 will be wrapping up the gifts! We believe that, with your help we can make a difference to the lives of those who need it most. Every donation counts, no matter how big or small any support you can offer will make a real impact. Please bring the donation in by the **17th December**.

We are asking for your support as your kindness will help make a difference by donating toiletries and warm clothing. Together, as a community, we can bring hope to those who are struggling.

If you have any questions or would like further information about how you can get involved, please do not hesitate to contact us. Your kindness can help someone feel valued and cared for.

Your Sincerely

Year 5
Gwenfo Church in Wales Primary School

Christingle Service



Reception Parents are invited to our Christingle Service on December 18th at 9.30am.

You'll learn about the tradition of the Christingle and make one with your child.

Thank you to Ruben and Tilly's Dad who has donated a plum tree from his workplace donation scheme. We are always thrilled to have donations and look forward to planting the tree soon.



We are a NUT and KIWI FREE School.

Please ensure any food bought into does not contain nuts or kiwi due to severe allergies!



Join us this year leading space scientist Dame Dr Maggie Aderin-Pocock as she takes us on an epic voyage through time and space.

This lecture will be livestreamed at Cardiff University Centre for Student Life building (CSL) in the Sir Stanley Thomas OBE Lecture Theatre. Park Place, Cardiff, CF10 3BB

Saturday 13th December 5:30pm-8pm.

It is free to attend, please sign up here: [Royal Institution Live Stream Christmas Lecture - CSL Saturday 13th December 5:30pm-8:00pm - Fill out form](#)

This event is perfect for all the family! Children and people of all ages can come and watch the magic of the lectures unfold in real time as they're filmed in front of an audience in the Ri's Theatre in London. They'll have the chance to get involved and be amazed by the mysteries of the Universe.



Arbor

We still have a few Parents that have not yet signed up to the Arbor App or Parent Portal. Please contact the office if you would like us to help you.

TO DO

- Make sure your child's details are up to date.
- Make sure your details are up to date.
- Please check any outstanding consents on the Arbor App or Parent Portal.



Spring Term Clubs

- All clubs cost £3 per session and run for 10 weeks (Until Easter).
- Spaces are limited and will be allocated on a first come first served basis.
- Clubs are run by staff and may change at short notice if staff are unwell.
- Instructions on how to do so are in the link below.



Please note - Membership is not confirmed until payment has been made.

Enterprise Club

Wednesday 3.30-4.30pm
led by Miss Hurrell &
Miss Williams

Year 2 and 6
8 Spaces Left



Coding Club

Monday 3.30-4.30pm
led by Mr Bean

Year 4, 5 and 6
6 Spaces Left



FOOTBALL

THURSDAY 3.30-4.30PM
LED BY MR BEAN

YEAR 5 AND 6
7 SPACES LEFT



Blooket Club

Monday 3.30 - 4.30pm
Led by Miss Bannister

Year 3, 4, 5 and 6
1 Spaces Left





ND
COMMUNITY
CONNECTORS
CIC

Connecting Parents & Carers to Support for Neurodivergent Needs

Cardiff, the Vale of Glamorgan
and surrounding areas.



<https://ndcommunityconnectorscic.org>

We have been made aware of a website full of information
for families. Please take a look!

Families Learning Together

Cardiff and Vale College
Coleg Coeddydd a'r Fro



Course name :
Fizzy Fun

School: **Gwenfo
Primary School**

Starts: **Monday
5th January 1pm**

For parents/carers of
children in Year 4, 5
and 6

Come along to
find out more

COURSE DETAILS

Join the fun and unlock the secrets to boosting your child's education right from your living room!

Dive into a whirlwind of STEM-tastic activities that promise to be a blast-literally! Get ready for some explosive fun as you and your children embark on thrilling adventures together!

You become a student and gain a certificate!



Contact us
families@cavc.ac.uk



We have an exciting new course for families with children in Year 4,5&6 starting after Christmas. This is a 10 week course run by Cardiff and Vale College in our Cabin on Monday afternoons - starting **Monday January 5th at 1pm Just turn up!**

Currently, blood stock levels of O-, the universal blood type, are lower than we'd like.

Key Facts to remember:

- 1 blood donation can save 3 lives, or 6 newborn babies.
- Our hospitals need us to collect 350 donations every day.
- Only 3% of the eligible population in Wales donate blood.
- You, or someone you know, may need blood one day.

Booking link: <https://wbs.wales/ValeofGlamorgan>



Welcome to the...

**CWMPAWD
TEULU BRO**

DOD O HYD I ATEBION GYDA'N GILYDD



**VALE FAMILY
COMPASS**

FINDING SOLUTIONS TOGETHER

**What is the
Vale Family
Compass?**



**One front door
to access support
for families**



**Family Information Service, Early
Help and Intake Team**



Now under one umbrella so you get
information, advice, support and
protection through one phone number,
one website and one email address.



0808 281 6727



**familycompass@
valeofglamorgan.gov.uk**

valefamilycompass.co.uk

Family Compass enables families to access support from Vale Services.

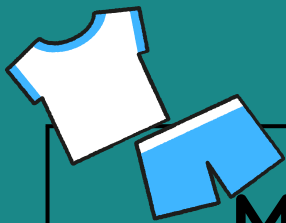
Please take a look at the website.
There is lots of help available for all aspects of
parenting and family life.



Games and PE days

On PE/Games days pupils can wear their PE Kit to school

Each class has two days where they wear kit apart from Nursery who only have one.



MONDAY	NURSERY, Y3 AND Y4
TUESDAY	Y1, Y2 AND Y6
WEDNESDAY	RECEPTION AND Y5
THURSDAY	Y1, Y2, Y3, Y5 AND Y6
FRIDAY	RECEPTION AND Y4



****Year 5 PE Sessions will change to Tuesday and Wednesday after Christmas****



Arbor

You can now log a same day absence on your Parent Portal or Arbor App.

To record an absence, click on the Quick Actions button and then click Attendance

From here, click the green Log Absence button in the top-right of the page

Here, you can input the start and end time for the absence and type in the reason for the absence. By default, the absence start and end times reflect the student's full day, but these can be adjusted as needed. Once you have filled in this data, click Log Absence. This will then be visible to school staff.

You can also log a same day absence by calling our absence line on **02920 593225** and pressing 1.

Gwenfo Church in Wales Primary School Absence Form



For any planned absences such as unauthorised holidays or future medical appointments, please either click the link [here](#) or scan the QR code with a smartphone.

Please make sure to complete the reason for absence in the Note section.

Office Hours

The school office is open from 8.30am-4pm daily.

Please check weekly newsletters/emails for information before contacting the school - we endeavour to send out all information in a timely manner.

All families should have a copy of our year planner.

Please note we will always try to respond to phone calls or emails as quickly as possible but at busy times we may take up to 5 days.

Teaching staff are always available at the end of the school day for a quick chat, or can make an appointment with you if a longer time is needed.