

Gwenfo News



January 9th 2026

Upcoming Events

Jan 5th and next 5 Mondays
Fizzy Fun - Y4/5/6 families
Just turn up!

Jan 8th
Football Club Starts

Jan 12th
Blooket and Coding Club
Start

Jan 13th
Reception visit for
Prospective Parents - 2.15pm

Jan 14th
Y1 Pizza Express Trip
Enterprise Club Starts

Jan 15th
Nursery visit for prospective
parents - 11:30am

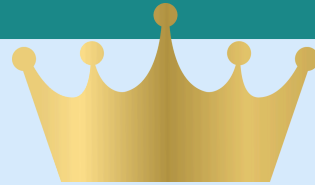
Jan 20th
Y5 Senedd School Trip

Jan 23rd
Year 2 Class Worship
(Y2 families welcome)
Non-Uniform day for
BALLAS

INSET DAY
Feb 23rd
School closed to all

The old e-mail address is no longer in use.
Please make sure you use our new email
address when contacting the school.

office@gwenfocwprimary.co.uk



Welcome back everyone!

We have had a super first week of the
new year! New Nursery pupils have
joined us and we have all settled back
into school brilliantly.


This week we remembered the three
kings as they visited Jesus and
celebrated Epiphany together.

Our value this half term is
perseverance and we began to think
about how we always keep trying even
when things may be tricky.

Attendance emails will have been sent out to families where pupils attendance has dropped below 90%. This is a Welsh Government drive led by the Local Authority to ensure that children attend school as regularly as they can.

If you have not received any communication this means your child/ren's attendance is over 90%. Any queries over attendance please do chat to classteachers or pop to the office.

Attendance

NURSERY AM	93.24%
NURSERY PM	88.89%
RECEPTION	94.95%
YEAR 1	89%
YEAR 2	92.41%
YEAR 3	96.55%
YEAR 4	95.17%
YEAR 5	93.67%
YEAR 6	99.2% 

REMINDER

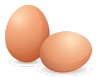
Staff have asked for a couple of reminders:

A number of pupils are still wearing nail varnish to school. We politely ask that this is removed.

Stud earrings only should be worn and a simple watch - no other jewellery e.g. bracelets or necklaces please.



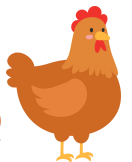
FOR SALE



We have a number of fresh chicken eggs available for sale! You can grab a box of 6 for just £2.40, or if you prefer, it's only 40p per egg. What a fantastic deal!

These eggs are perfect for breakfast, baking, and all sorts of culinary delights. So why not treat yourself and your family?

If you're interested, do let us know—we would love to get these eggs to you soon!



TO DO

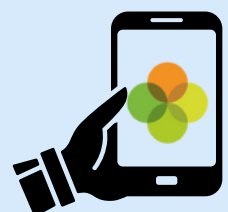


Arbor

We still have a few Parents that have not yet signed up to the Arbor App or Parent Portal. Please contact the office if you would like us to help you.

- Make sure your child's details are up to date.
- Make sure your details are up to date.
- Please check any outstanding consents on the Arbor App or Parent Portal

Ensure you have responded to our email from before Christmas regarding updating Ethnicity information.



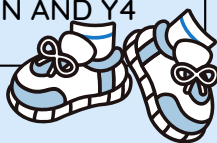
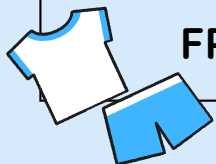
Thank You!

Games and PE days

On PE/Games days pupils can wear their PE Kit to school

Each class has two days where they wear kit apart from Nursery who only have one.

MONDAY	NURSERY, Y3 AND Y4
TUESDAY	*Y5* AND Y6
WEDNESDAY	RECEPTION, *Y1*, Y2 AND Y5
THURSDAY	Y1, Y2, Y3 AND Y6
FRIDAY	RECEPTION AND Y4



In 3 weeks Y1's PE days will change to Tuesday and Wednesday

CCFC Dan is back!

Wk 1,2 & 3

Y1/2/3&4 will have sessions on a Wednesday

Wk 4,5& 6

Nursery, Year 6 and Reception will have their sessions on a Wednesday



Y5 loved their first session with Cardiff Rugby and came up with some excellent ideas for warm up games.



Other News



Our eco group would like to get out into the village to do some regular litter picking. Does anyone have a spare litter picker they would like to donate to us?



Even the cold weather doesn't stop forest school sessions. Thanks to Mrs Peterken and Mrs Kennedy for the lovely warm hot chocolate!



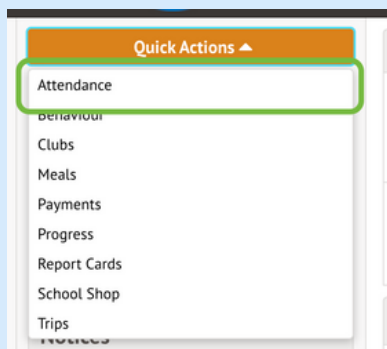
We are a NUT and KIWI FREE School.

Please ensure any food bought into does not contain nuts or kiwi due to severe allergies!



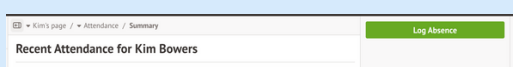
Arbor

You can now log a same day absence on your Parent Portal or Arbor App.



To record an absence, click on the Quick Actions button and then click Attendance

From here, click the green Log Absence button in the top-right of the page



Here, you can input the start and end time for the absence and type in the reason for the absence. By default, the absence start and end times reflect the student's full day, but these can be adjusted as needed. Once you have filled in this data, click Log Absence. This will then be visible to school staff.

You can also log a same day absence by calling our absence line on **02920 593225** and pressing 1.

Gwenfo Church in Wales Primary School Absence Form



For any planned absences such as unauthorised holidays or future medical appointments, please either click the link [here](#) or scan the QR code with a smartphone.

Please make sure to complete the reason for absence in the Note section.

Office Hours

The school office is open from 8.30am-4pm daily.

Please check weekly newsletters/emails for information before contacting the school - we endeavour to send out all information in a timely manner.

All families should have a copy of our year planner.

Please note we will always try to respond to phone calls or emails as quickly as possible but at busy times we may take up to 5 days.

Teaching staff are always available at the end of the school day for a quick chat, or can make an appointment with you if a longer time is needed.



Wedi ei ariannu gan
Llywodraeth y DU

Funded by
UK Government

ND
COMMUNITY
CONNECTORS
CIC



Cadog's Corner



ND Support Coffee Mornings

**For parents/carers of children on the Neurodevelopmental
Service waiting list or with a diagnosis.**

Topics include:

**Introduction to ND, Services and support available whilst
waiting or post diagnosis, Education, Finance, Wellbeing.**

**Location: Victoria Park Community Centre,
24 Church Road, Barry, CF63 1JX**

Time: 9:15am till 10:45am

Dates: Friday, 9th January 2026

Friday, 23rd January

Friday, 6th February

Friday 6th March

Friday, 20th March

Friday, 17th April

Friday, 1st May

Friday, 15th May

Friday, 12th June

Friday, 26th June

<https://ndcommunityconnectorscic.org>

**Vale of Glamorgan Community Connectors
Coffee Mornings at Cadoxton Primary School.**

All welcome.

Families Learning Together



Course name :
Fizzy Fun

**School: Gwenfo
Primary School**

**Starts: Monday
5th January 1pm**

**For parents/carers of
children in Year 4, 5
and 6**

**Come along to
find out more**

COURSE DETAILS

Join the fun and unlock the secrets to boosting your child's education right from your living room!

Dive into a whirlwind of STEM-tastic activities that promise to be a blast-literally! Get ready for some explosive fun as you and your children embark on thrilling adventures together!

You become a student and gain a certificate!



Contact us
families@cavc.ac.uk

We have an exciting new course for families with children in Year 4,5& 6 starting after Christmas. This is a 10 week course run by Cardiff and Vale College in our Cabin on Monday afternoons - starting **Monday January 5th at 1pm** Just turn up!



Welcome to the...

**CWMPAWD
TEULU BRO**
DOD O HYD I ATEBION GYDA'N GILYDD



**VALE FAMILY
COMPASS**
FINDING SOLUTIONS TOGETHER

**What is the
Vale Family
Compass?**



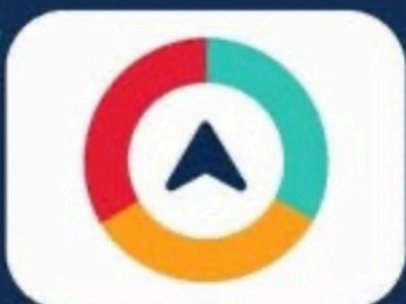
**One front door
to access support
for families**



**Family Information Service, Early
Help and Intake Team**



Now under one umbrella so you get
information, advice, support and
protection through one phone number,
one website and one email address.



0808 281 6727



**familycompass@
valeofglamorgan.gov.uk**

valefamilycompass.co.uk

Family Compass enables families to access support from Vale Services.

Please take a look at the website.

There is lots of help available for all aspects of
parenting and family life.

Attendance Update



Together with the Local Authority, schools are working hard to raise attendance.

You may have seen the banner on our fences or received an email regarding attendance during the year.

The Welsh Government has now changed the official threshold for persistent absence to 10% of required sessions.

Therefore schools are being tasked to advise families where children's attendance falls under 90% and into this category.

Schools have been provided with template letters to send out to families to raise awareness and ensure consistency across the local authority.

Ideally all children should attend school every day. We acknowledge that some children may need to have time away from school and it is key that we record this accurately.

If your child has a medical appointment that you cannot rearrange to one out of school hours then this is recorded as M (medical) on their records. We appreciate that medical appointments often cannot be rescheduled so it is important we record them accurately.

We also appreciate that children can get ill - again this is important to let school know. We also appreciate that some illnesses such as vomiting require a 48hr absence to ensure a child is well enough to return to school.

Below is a link to the Public Health Wales website which offers some advice regarding how long children should be away from school when suffering with common illnesses.



Schools have been tasked with alerting parents when attendance drops below 90% - this will be looked at each half term and parents alerted. For the vast majority of our pupils we would expect to see a rise in attendance in the following weeks and over the next half term.

Where attendance continues to drop we would communicate this with families and in some circumstances ask to meet to discuss ways to support your child's attendance.

The Local Authority has sight of this data and will advise schools where additional input may be needed.

This also includes schools seeking additional support from the Local Authority. In the first instance this will always start with a conversation with families.

In rare occasions this could end up with more formal conversations and fixed penalty notices (FPNs) resulting in fines if all other measures are not successful and attendance continues to drop.

Please note FPNs are rare and are a last resort following many conversations and multiple efforts to improve attendance.

For our Nursery families, whilst attending a nursery setting is not statutory, you have chosen to bring your child to our setting taking up a place with us. Our expectation is that your child attends daily unless we are notified of medical needs as noted previously.

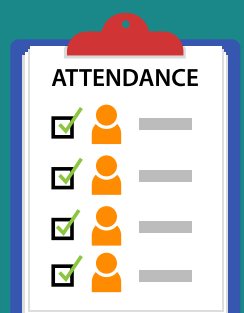
Good attendance habits in school start from attending Nursery daily.

The most important thing in all of the above is communication - you will know your child is spending less time in school and the impact this is having on them and your family.

Come and talk to us

In most cases we can support families and look at ways to increase your child's engagement with school.

We are always very happy to discuss attendance - pop in and chat with class teachers or you are welcome to make an appointment with senior staff.





We are seeing a rise in the numbers of children late for school, or who are bring collected early.

The majority of our pupils will be expected to attend full sessions. We work closely with families where this is not possible.

Where a child is late 5 times, or is collected early 5 times a meeting will be arranged for you to discuss your circumstances with a member of senior staff.

Where children have an appointment please bring along the booking letter or card.

Arriving late or leaving early not only disrupts your child's learning but that of others too.

At times you may have to wait to sign in late children until there are staff to accompany your child to class. The same for any children who are being collected early.

We apologise for this but do not have the staff available to manage this.

Attendance can fluctuate over the year - for example a child taking 10 days holiday in the Autumn term (10 days absence out of a possible 65 days in school) would have an Autumn attendance of around 84%.

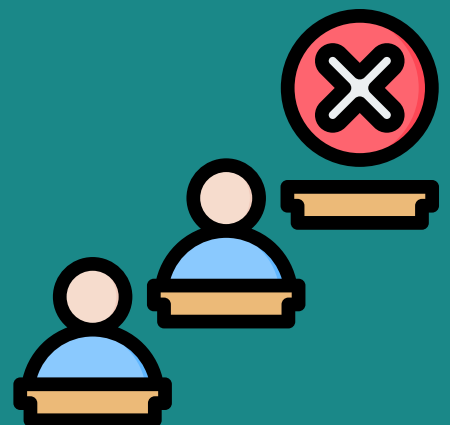
If the child has no further absences for the whole of the spring term those 10 days of absences would be spread over 120 school days (autumn plus spring term) - changing their attendance percentage to 96%

Therefore true attendance is not known until the end of the summer term at the completion of the year - however by informing parents when their child slips below 90% we hope this will alert them that attendance following this period needs to improve.



Arbor

You can track your child's attendance on the Arbor app.



Holidays

No holidays will be authorised from September 2025 onwards including those which have been pre-booked.

This is echoed by the Welsh Government drive to raise attendance in all settings.

Good habits start early in our lives which is why there will be more regular updates about attendance for all families from Nursery up to Year 6.

Absences due to holidays will be marked as unauthorised on school registers from September 2025.

As the school has an automated messaging service for absences we ask that we are notified of any planned holidays so that we can update registers in advance.

Gwenfo Church in Wales Primary
School Absence Form

