

Gwenfo News



26th June 2026

Upcoming Events

June 9th (for 5 weeks)
Year 2 Road Safety

29th June
Rainbow Day 
Wear Bright Clothes

29th June - 10th July
Y4 Swimming Lessons

3rd July
School Reports to all families

8th July
Y6 service Llandaff Cathedral
Music Afternoon
Pupil Progress Meetings

10th July
Y6 Leavers Worship 9am

15th July
Summer Fair 3.30-5pm

20th July
Inset Day
School closed to all pupils

21th July
Summer Holidays
School closed to all pupils

This week in Gwenfo

Our value this half term is
Truthfulness

Thank you to families for your support this week. We are sure it has been a tricky week for you all. It has been uncomfortable for us all in school but pupils and staff have been amazing! I am so proud of everyone!

Well done to Nursery AM and PM classes who wowed us with their class worship this week. It was wonderful to celebrate everything you have been learning about this year! Thank you to families for coming along and showing such wonderful support.

Please keep an eye on the calendar as we have lots of events to squeeze in over the last few weeks.

We look forward to welcoming everyone back to school on Monday wearing their brightest clothes for Rainbow Day.

YEAR 4



For the duration of our swimming lessons, children may wear their PE kit to school every day.

Please ensure that your child comes to school swim ready, wearing their swimming costume or trunks underneath their PE kit. This will help minimise changing time and maximise time in the pool.

Please also remember to send:

- Underwear to change into after swimming.
- A towel.
- Goggles & a swimming cap if your child does not want their hair to get wet.

We also ask that all girls with long hair have it tied back and, where possible, braided to make swimming and changing easier.

YEAR 4

If you have any colour magazines that are no longer needed, please could you send these in for an Art project, thank you!

CARDIFF & VALE FOOTBALL TOURNAMENT



A few of our Year 6 girls took part in The Premier League Primary Stars Girls Football Competition last week, please see the scores below:

Gwenfo 0 - 2 Raglan

Gwenfo 2 - 0 Brynnau

Gwenfo 0 - 3 Bryn Deri

WELL DONE GIRLS!

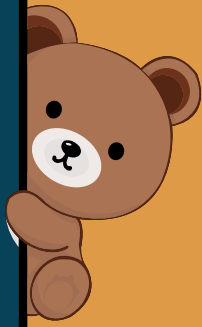


PE DAYS



	MONDAY	TUESDAY	WEDNESDAY	THURSDAY	FRIDAY
W/C 29/06	NURSERY AM & PM YEAR 4	YEAR 1 YEAR 2 YEAR 3 YEAR 6	RECEPTION YEAR 1 YEAR 2 YEAR 5	YEAR 3 YEAR 6	RECEPTION YEAR 4 YEAR 5
W/C 06/07	NURSERY AM & PM YEAR 4	YEAR 1 YEAR 2 YEAR 3 YEAR 6	RECEPTION YEAR 1 YEAR 2 YEAR 5	YEAR 3 YEAR 6	RECEPTION YEAR 4 YEAR 5
W/C 13/07	NURSERY AM & PM YEAR 4	YEAR 1 YEAR 2 YEAR 3 YEAR 6	RECEPTION YEAR 1 YEAR 2 YEAR 5	YEAR 3 YEAR 6	RECEPTION YEAR 4 YEAR 5

TEDDIES



We are looking for donations of teddies to use as prizes at the school fair. If you have any teddies - large or small please pop them into the office.

TOMBOLA

We are collecting bottles for the bottle tombola - water, alcohol, bath bubbles etc. All donations welcome!



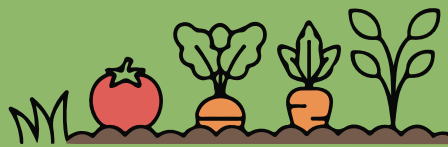
PARKING

We are still being told of inconsiderate parking within the village. Please be careful where you park - even where there is no signage or road markings - please park ensuring you are not blocking pavements, obstructing the view of other road users and being mindful of driveways and verges. We are thrilled that a growing number of children are cycling to school - please keep an eye out for them as you enter roads around the school.



Wenvoe Wildlife group have been supporting the Nursery pupils with their very own veg patch. It has been such a wonderful project and the children have loved growing, and eating, their own veg!

We are now setting our sights on to the peace garden that everyone walks past daily - it needs a good weed, tidy up and some fresh planting. We need some help! If you, your children and even extended family members may be interested in lending hand please let us know!



We are compiling a list of willing helpers so please pop into the office to let us know if you can help.

This could be after school, evenings, over a weekend or even during the school day. You can help once or sign up for more regular help!



Thank you!



Thank you and well done to all of our families who joined the Cardiff and Vale Monday group this term.

We are hoping to continue to run various workshops and classes next year. Watch this space!



ROADWAY ROYALTY! Beat the boredom this summer and join us to stage a show in a week, make new friends, and have the **BEST** time. Open to current and new students.
Nearly full!

Juniors & Seniors (Ages 8-16) Throughout the week, students will sing, dance, and act their way through material inspired by hit shows including Legally Blonde, Six, Hamilton, Mean Girls, and Bring It On.

Week 1 - Kings Monkton (Roath) 10am-3pm - <https://shorturl.at/vTWe6>

Week 2 - Radyr Comprehensive (Radyr) 10am-3pm - <https://shorturl.at/a3Ezd>

Disney Hero & Villains, learn songs, dances & dress up as your favourite Hero or Villain from Disney's Stage & Screen
Mini's & Midis (Ages 3-7)

Week #1 Kings Monkton (Roath) 9:30-1:30pm - <https://shorturl.at/1JPkK>

Week #2 Radyr Comprehensive (Radyr) 9:30-1:30pm - <https://shorturl.at/KIXqS>



This free, family-friendly event celebrates the wonderful wildlife of the Vale of Glamorgan. It's a fantastic opportunity for pupils and their families to connect with nature over the summer.

What's happening on the day:

Hands-on activities

Nature crafts and games

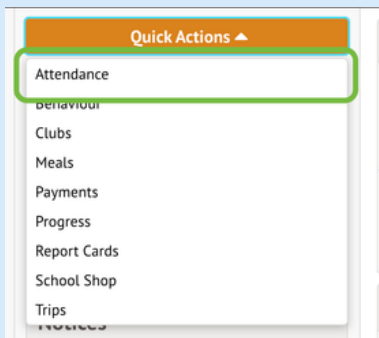
Opportunities to meet local conservation groups

You can find out more and register here:

<https://www.eventbrite.co.uk/e/vale-nature-festival-2026-tickets-1980855351680?aff=oddtcreator>

ATTENDANCE

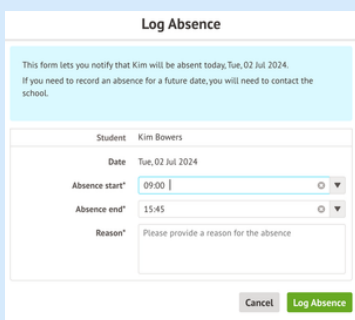
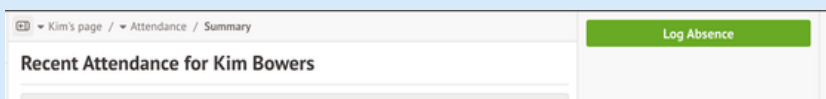
NURSERY AM	68.75%	★
NURSERY PM	41%	
RECEPTION	56.36%	
YEAR 1	57.93%	
YEAR 2	55.36%	
YEAR 3	59.33%	
YEAR 4	61.07%	
YEAR 5	59%	
YEAR 6	59.6%	



You can now log a same day absence on your Parent Portal or Arbor App.

To record an absence, click on the Quick Actions button and then click Attendance

From here, click the green Log Absence button in the top-right of the page



Here, you can input the start and end time for the absence and type in the reason for the absence. By default, the absence start and end times reflect the student's full day, but these can be adjusted as needed. Once you have filled in this data, click Log Absence. This will then be visible to school staff.

You can also log a same day absence by calling our absence line on **02920 593225** and pressing 1.

Gwenfo Church in Wales Primary School Absence Form



For any planned absences such as unauthorised holidays or future medical appointments, please either click the link [here](#) or scan the QR code with a smartphone.

Please make sure to complete the reason for absence in the Note section.

Week 4

SCHOOL DINNERS

Next weeks dinner options will be from
'Week 4' on the Big Fresh menu

We would appreciate it if you take time to go through the menu and pre-order on Parentpay as we are having some upset children at the counter who are unhappy with the hot meal choice.

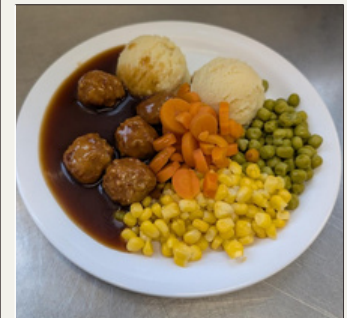
Due to the last minute changes in the menu last week, the kitchen has stock to use so please see below the changes for Week 4



Pork or Vegetarian Sausage,
Omelette, Beans, Tomato, Hash
Brown & Mushrooms



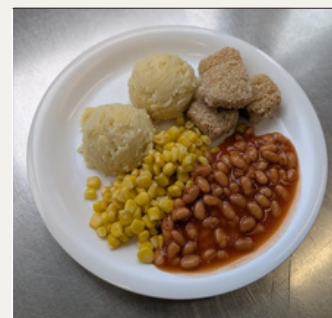
Beef Burger
or Veggie Burger



Pork Meatballs or
Veggie Balls in Gravy



Slow Cooked Beef
or Diced Quorn



Birdseye Fish Fingers
or Quorn Dippers



Fish fingers replacing
salmon bites

Please pre-book meals where possible:

Hot Meal, Vegetarian Hot Meal, Baked Potatoes or Baguettes

Please note they can only be given what has been pre-ordered or the hot meal option if booking on the day.



- Make sure your child's details are up to date.
- Make sure your details are up to date.
- Please check any outstanding consents on the Arbor App or Parent Portal
- Please check guardians and contacts section on Arbor and make sure these are up to date.
- Please check medical and dietary sections on Arbor, some conditions may need to be added/ updated/ removed.

Please can anyone who has not brought in a Birth Certificate for your child also bring that into the office so we can add it to you childs Arbor.

Thank You!

Anyone that has permission to collect your child regularly from school should be added to your childs contact list via the app. Please make sure the can collect box is ticked.

Office Hours

The school office is open from 8.30am-4pm daily.

Please check weekly newsletters/emails for information before contacting the school - we endeavour to send out all information in a timely manner.

All families should have a copy of our year planner.

Please note we will always try to respond to phone calls or emails as quickly as possible but at busy times we may take up to 5 days.

Teaching staff are always available at the end of the school day for a quick chat, or can make an appointment with you if a longer time is needed.

The old e-mail address is no longer in use. Please make sure you use our new email address when contacting the school.

office@gwenfocwprimary.co.uk

We are a NUT and KIWI FREE School!



Please ensure any food bought into does not contain nuts or kiwi due to severe allergies!

Welcome to the...

**CWMPAWD
TEULU BRO**
DOD O HYD I ATEBION GYDA'N GILYDD



**VALE FAMILY
COMPASS**
FINDING SOLUTIONS TOGETHER



**What is the
Vale Family
Compass?**



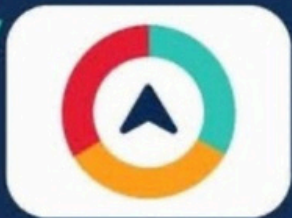
**One front door
to access support
for families**



**Family Information Service, Early
Help and Intake Team**



Now under one umbrella so you get
information, advice, support and
protection through one phone number,
one website and one email address.



0808 281 6727
familycompass@
valeofglamorgan.gov.uk
valefamilycompass.co.uk

Family Compass enables families to access support from Vale Services.

Please take a look at the website.

There is lots of help available for all aspects of parenting and family life.

[https://ndcommunityconnecto
rscic.org](https://ndcommunityconnecto
rscic.org)



LISTENING Lunch

family
lives

Come along to our online support group for parent and carers of children experiencing emotional wellbeing and mental health needs.



**Every fourth Wednesday
of the month, 12pm to 1pm**

For more information about this service, email CharlotteW@familylives.org.uk or scan the QR code to sign up

SCAN ME!



We build better family lives together

www.familylives.org.uk

@familylives



GIG
NHS
Wales
Bwrdd Iechyd Prifysgol
Caerdydd a'r Fro
Cardiff and Vale
University Health Board

CYPF PPIT



Family Lives is registered as a company limited by guarantee in England and Wales No. 3817762. Registered charity No.1077722. Registered address: The Annex York House, Salisbury Square, Hatfield, Hertfordshire, AL9 5AD



Wedi ei ariannu gan
Llywodraeth y DU
Funded by
UK Government



Cadog's Corner ND Support Coffee Mornings

For parents/carers of children on the Neurodevelopmental Service waiting list or with a diagnosis.

Topics include:

Introduction to ND, Services and support available whilst waiting or post diagnosis, Education, Finance, Wellbeing.

**Location: Victoria Park Community Centre,
24 Church Road, Barry, CF63 1JX**

Time: 9:15am till 10:45am

Dates: Friday, 9th January 2026

Friday, 23rd January

Friday, 6th February

Friday 6th March

Friday, 20th March

Friday, 17th April

Friday, 1st May

Friday, 15th May

Friday, 12th June

Friday, 26th June



GOLDEN RULE
TREAT OTHERS AS
YOU WANT TO BE
TREATED



BE READY

BE ON TIME AND READY TO LEARN
WEAR SCHOOL UNIFORM
BRING EVERYTHING YOU NEED TO SCHOOL



BE RESPECTFUL

LISTEN TO OTHERS AND EXPECT TO BE LISTENED TO
LOOK AFTER OUR BUILDING, OUTDOOR AREAS, EQUIPMENT AND DISPLAYS
REPRESENT GWENFO - BOTH IN AND OUT OF SCHOOL



BE RESPONSIBLE

BE SAFE IN SCHOOL, OUT OF SCHOOL AND ONLINE
BE IN THE RIGHT PLACE AT THE RIGHT TIME
REPORT ANY PROBLEMS TO AN ADULT